

With English Texts

GRANDES

AÑO 11 Nº 58  
P.V.P. 5,70€ - Portugal cont.: 4,75€

# ESLORAS

YATE INTERNACIONAL

WWW.REVISTAGRANDESESLORAS.COM

MC

0.0058  
8 414090 116268

**LIONHEART**

El espíritu  
de los 30

**FILIPPETTI  
YACHT  
NAVETTA 26**

Nace el Eco Chic

**HEESEN SKY**

Forma y función

**AUSTIN PARKER 72 FLY**

El lobster sofisticado

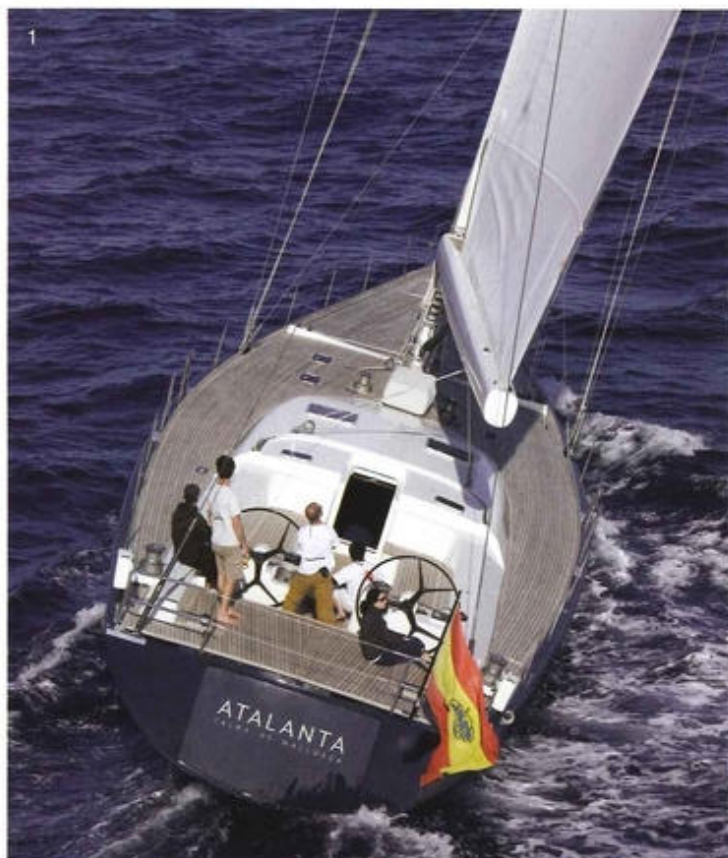
ANTIBES YACHT SHOW • YARE AFTERSALES & REFIT EXHIBITION • PALMAVELA 2011 • GRANDES MARINAS: PORT GALLICE

# ATALANTA

## De Mallorca al cielo

Marta Capdevila

**El Atalanta, sloop de aluminio de 25,23 metros de eslora diseñado por Judel & Vråliik, recibe este año el verano en su amarre de Palma de Mallorca, listo para fondear las calas más bonitas del Mediterráneo.**



1. El Atalanta, de 25,13 metros de eslora, salió en 2002 del astillero de JFA Chantier Naval en Francia. Con base en Palma de Mallorca, está disponible para chárter en el Mediterráneo Este y Oeste.

2. La moderna configuración del comedor, con sofá en forma de L y cubos de teca, permite a diez comensales sentarse a la mesa.

En la concepción del velero ha primado el confort y la sensación de amplitud, tanto en los holgados interiores como en la diáfana cubierta, muy cómoda para realizar las maniobras sin importunar a los invitados. Estos disponen de una holgada área acolchada para tomar el sol y de confortables asientos en la bañera. La plataforma de baño incluye una ducha con agua caliente y fría. A bordo también hay una 4.9 Italboat Predator 80 hp Suzuki (2009), dos botes para esquí acuático, wake board y compresor de buceo con tres botellas. Una vez en el interior, el mar sigue presente gracias a las ventanas y escotillas que inundan el salón de luz natural. La pureza de líneas del mobiliario, realizado en madera de teca, impregna el ambiente de un contundente estilo contemporáneo. A estribor se organiza un sofá en forma de L y varios cubos de teca para que hasta diez comensales puedan sentarse alrededor de la mesa. Un sofá similar y una mesa de café baja dan forma al rincón de la sala de estar, que dispone de televisión de pantalla plana, DVD y equipo de alta fidelidad.

La zona de noche comprende una cabina doble tipo suite, la del armador, y dos cabinas dobles con camas individuales, todas con aire acondicionado. La cabina del armador se encuentra a proa e integra, además del cuarto de baño, un sofá y un escritorio que hace las veces de tocador. La estancia está provista de mucho espacio de almacenaje, entre cajones, colgadores y armarios. Gracias a las amplias ventanas laterales y escotillas, todas las cabinas tienen luz natural a raudales. A ambos lados del salón se ubican las dos cabinas de invitados, exactamente iguales, con dos camas individuales –más una Pullman– y cuarto de baño en suite. El baño a estribor tiene una cabina de ducha separada. Aunque sólo caben seis invitados durmiendo, en travesía puede haber hasta doce personas a bordo.

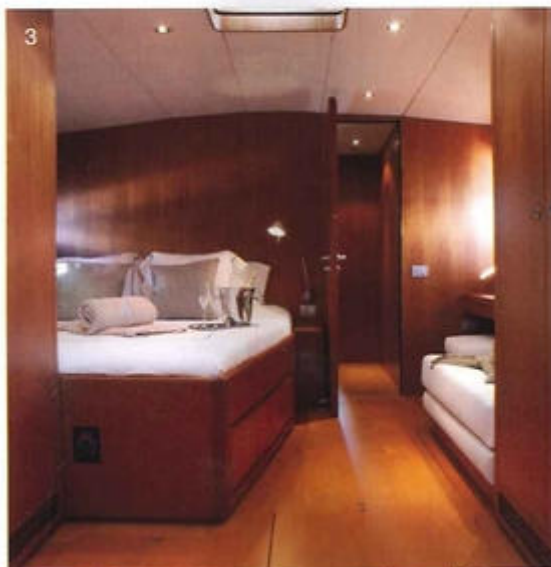
### Esencia mediterránea

Si bien en este tipo de chárter exclusivo los itinerarios siempre se personalizan, Ocean Independence lanza una propuesta que

El estudio alemán Judel & Vråliik diseñó el Atalanta, elegante sloop de aluminio que en 2002 salió del astillero de JFA Chantier Naval en Francia. Pero no sólo por su belleza cautiva el Atalanta, también por su estabilidad y fácil manejo. De hecho una pequeña tripulación –actualmente formada por patrón, cocinera/azafata e ingeniero/skipper– es suficiente para que seis invitados disfruten de una plácida travesía a una velocidad de crucero de 8,5 nudos (la máxima es de 10,5 nudos). Asimismo el estilo minimalista de los interiores, obra de los madrileños Barracuda Yacht Design, sorprende al contrarrestar la sobriedad de sus depuradas líneas con la calidez de la madera de teca y la luminosidad.



3. La cabina del armador, panelada en madera de teca, derrocha elegancia y calidez. La estancia incluye un sofá y un escritorio-tocador.



4. La cocina es una muestra del virtuoso ejercicio de diseño realizado por el estudio madrileño Barracuda Yacht Design. Funcional, luminosa y moderna.



5. La zona de estar, organizada en torno a una mesita de centro y la televisión de pantalla plana, goza de una excepcional luminosidad.



6. Las dos cabinas de invitados tienen dos camas individuales y una Pullman. Ambas disponen de cuarto de baño en suite.



partiendo de Mallorca hace un recorrido de ocho días por algunos de los enclaves más bonitos de las Baleares. La travesía empieza en el puerto de Palma de Mallorca, base del Atalanta. Una vez se hayan instalado los invitados en sus cabinas, bajarán a tierra para disfrutar de una primera noche en el casco antiguo de Mallorca. Por la mañana el velero inicia la singladura a Es Trenc y luego pone rumbo al Parque Natural de Cabrera, donde se terminará la jornada cenando bajo las estrellas. Los siguientes días, siempre según el viento, se fondeará en cala Yondal, Port Roig, cala Conta... La quinta singladura lleva el velero hasta Formentera; tras una primera parada en el puerto, se fondea en la blanquísima Espalmador. Tras pasar la noche en Formentera, el Atalanta navegará hasta cala Salada, idílico punto en la costa norte de Ibiza. Desde aquí se parte al puerto de Ibiza, donde el velero estará amarrado una o dos noches, según el espíritu festivo del grupo. La ruta de vuelta a Mallorca todavía depara una sorpresa antes de llegar al puerto de Palma: cala Egos, al oeste de Andratx. La tarifa de chárter del Atalanta es de 25.000 euros/semana en temporada baja y 29.000 euros/semana en julio, agosto y eventos (sumar 18% VAT). El precio no incluye provisiones, combustible y amarres. <<

**CONTACTO**

Ocean Independence  
Palma de Mallorca  
Club de Mar s/n  
Tel. 971 40 44 12  
Reservas: Barbara Mueller  
barbara@ocyachts.com  
www.oceanindependence.com

**Explosion of natural undertones**

Colonia Assoluta, by Aqua di Parma, is a blend of over twelve natural ingredients. The fragrance opens with Sicilian citrus bergamot and verbena, its heart then reveals jasmine, rose and pepper, and its base notes conceal American cedar wood, amber and patchouli.

**Maximum versatility**

Bang & Olufsen's speaker range has expanded following the launch of BeoVox 2, especially designed for walls and ceilings as they can be adjusted both vertically and horizontally towards a certain listening position. Price: 770 euros.

**The case that winds**

The Italian firm Scatola del Tempo was born twenty years ago when watch collector Sandro Colanietti decided to create a winding case for his timepieces. The new models 6RT EB Oversize and 9RT EB Oversize, in briar root wood, can wind up to nine watches at the same time and boast ten rotating programmes.

**Retro photography**

Fujifilm's GF670W Professional medium-format camera features a Fujinon EBC 55mm lens. The camera is also fitted with a rangefinder and aperture-priority AE and manual exposure modes. Being a medium-format wide-angle camera, it is particularly suited to capturing images of the natural environment.

**Professional demands**

The innovative XA10 is one of Canon's best all-round and ultra-compact camcorders. This new model combines the firm's well-renowned image quality with professional audio functions and full manual control. More information: [www.canon.com](http://www.canon.com)

**Modern times**

S.T. Dupont has unveiled its iPhone case (pictured). Made from vegetable-tanned goatskin in black or white, it is finely-grained and silky smooth. The leather accessories range Liberté, which already featured cases and diaries, is completed with a practical cardholder.

**Behind dark glasses**

This summer's Tom Ford aviator-style sunglasses follow the retro trend so in fashion for the last few sea-

sons, but add a new twist. The fashion house breaks ground by designing more primitive lines, as seen on the bridge, and incorporating blue-tint lenses.

**The art of fashion**

Hermès collections are often more akin to art than fashion, especially when it comes to patterns. The French fashion house's accessories stand out for their boldly-coloured and figurative designs with artistic airs. Imagination runs riot on their scarves, as seen on this new piece.

**Out-and-out nautical**

Clothes and accessories designed by French fashion house Lacoste have long been nautical-themed. Few items will turn more heads aboard than a blue/white striped jersey, such as this one from the summer 2011 collection.

**Citterio and Vitra join forces**

At the fiftieth edition of the Milan Furniture Fair, Technogym unveiled the Recline Personal, an exercise bike that combines Technogym's experience with design by Antonio Citterio and Vitra. The bike comes with Internet connection accessed by a touchscreen.

**Patron of the arts**

To mark the twentieth anniversary of its Culture Arts Patronage Award, Montblanc is paying tribute to the man considered to be the first patron of the arts, Gaius Cilnius Maecenas, the Roman diplomat heralded as the founder of cultural patronage.

**Icon of elegance**

Tods loafers have become a worldwide icon of casual elegance. Each year, the men's collection rolls out vivid imagination with new colours and textures that follow current trends without betraying classic design. In the photo, blue loafers from the summer collection.

**Supersonic tribute**

On 14<sup>th</sup> October 1947, the Bell X1 made its first manned supersonic flight, breaking the speed of sound and entering the history books. The new Oris Big Crown X1 watch pays tribute to this incredible aviation milestone, with its historically-accurate slide rule bezel and 3-bar water resistance.

**Cowes, yachting capital**

The summer months see some of the world's most beautiful yachts sailing off Cowes. The most famous regattas include the Royal Southern Oyster Week (27<sup>th</sup> June to 1<sup>st</sup> July), the Cowes Panerai Classic Yachts Challenge (16<sup>th</sup> to 23<sup>rd</sup> July), the Swan European Regatta (9<sup>th</sup> to 15<sup>th</sup> July) and the Rolex Fastnet Race (14<sup>th</sup> August). To check events and find accommodation:

**Regattas with swing**

Those taking part in the XIII Trofeo S.M. La Reina at the Real Club Náutico Valencia (30<sup>th</sup> June to 3<sup>rd</sup> July) can enjoy post-regatta swing at the 15<sup>th</sup> Jazz Festival being held at the Palau de la Música de Valencia (4<sup>th</sup> to 17<sup>th</sup> July), which this year will pay homage to Miles Davis and Nina Simone. Highlight acts include Brad Mehldau, Chano Domínguez & Paquito D'Rivera, Dianne Reeves and Lizz Wright.

**Classics in Barcelona**

The 4<sup>th</sup> edition of the Regata Puig Barcelona Vela Clásica for vintage and classic boats is being held between 13<sup>th</sup> and 16<sup>th</sup> July. During these hot summer days, the 35<sup>th</sup> edition of the Grec Festival will also be taking place in Barcelona (17<sup>th</sup> June to 24<sup>th</sup> July). Don't miss the Barcelona debut of Slovenian director Tomaz Pandur, who will be bringing Visconti's *The Damned* to the stage.

**Côte d'Azur event**

The 16<sup>th</sup> edition of Les Voiles d'Antibes (8<sup>th</sup> to 12<sup>th</sup> June) is the first Mediterranean meeting of vintage and classic boats within Panerai's international circuit. The event is hosted by Yacht Club d'Antibes and the Club Nautique d'Antibes. The marina village will be the venue for exhibitions, cocktail parties, concerts and cultural activities. The opening cocktail party is at 6pm on 8<sup>th</sup> June.

**Journey on the high seas**

The exhibition *Viatge mar enllà* at Barcelona's Maritime Museum illustrates different perspectives of sailing through the physical and symbolical elements of any sea crossing. On show are model boats, nautical charts, navigational instruments, paintings, ex-votos and figureheads. Until 31<sup>st</sup> December 2011.

**ATALANTA**

To heaven and back

*Atalanta*, the 25.23-metre aluminium sloop designed by Judel & Vrolijk, welcomes in the spring from her Palma de Mallorca berth, all ready to anchor off the Mediterranean's most stunning coves this summer.

The German studio Judel & Vrolijk designed *Atalanta*, an elegant aluminium sloop delivered in 2002 by the French shipyard JFA Chantier Naval. It's not just the beauty of *Atalanta* that is mesmerising, but also her stability and easy handling. In fact, a small crew – currently formed by skipper, chef/hostess and chief engineer – is enough for six guests to enjoy a serene crossing at a cruising speed of 8.5 knots (top speed is 10.5 knots). What's more, the minimalist interior design, work of Madrid-based Barracuda Yacht Design, turns heads by offsetting the austerity of its pure lines with the warmth of teak and natural sunlight.

Comfort and space played a leading role in conceiving this sailing yacht, both in the roomy interiors and on the uncluttered deck, perfect for performing manoeuvres without disturbing guests. A spacious sunbathing area and comfortable seats in the cockpit also provide relaxation for these guests. What's more, the swim platform features a hot-cold shower. Also on board are a 4.9-metre Italboat Predator with 80hp Suzuki engine (2009), two sets of water skis, wakeboard and dive compressor with three bottles. Once inside, the sea remains present thanks to the windows and hatches that flood the saloon with natural light. To starboard is an L-shaped sofa and several teak cube stools which together provide seating for up to ten guests at the table. A similar sofa and coffee table give shape to the living area, which features a flatscreen TV, DVD player and music system.

The night-time area consists of the owner's ensuite cabin with double bed, and two twin cabins, all air-conditioned. The owner's cabin is placed forward and boasts, besides the bathroom, a sofa and desk that doubles as a dressing table. Lots of storage space is available, including drawers, hanging lockers and cupboards. Thanks to the large side windows and hatches, all the cabins are bestowed with oodles of natural light. The mirror-image guest cabins lie on each side of the saloon, both with twin beds – plus Pullman – and ensuite bathroom, the starboard one having a separate shower enclosure. Although only six guests can sleep on board, there is room for up to twelve when cruising.

**Mediterranean essence**

Even though routes on this type of exclusive charter are always tailor-made, Ocean Independence suggests an eight-day cruise departing from Mallorca and stopping off at some of the most stunning locations around the Balearics. The charter begins in Palma de Mallorca, the home port of *Atalanta*. Once guests have settled into their cabins, they disembark to enjoy the first night in Palma's old quarter. The following morning, the day's sail starts at Es Trenc and then heads towards the Cabrera National Park, where guests spend the evening dining under the stars. Over the next few days, depending on the wind, the yacht anchors at Cala Jondal, Port Roig, Cala Conta... On the fifth day, *Atalanta* sets sail for Formentera. After a short stop-off at the port, she anchors off the dazzling white beach of Espalmador. After spending the night in Formentera, *Atalanta* sails to Cala Salada, an idyllic cove on Ibiza's northern coast. From here, she heads down to Ibiza Town, anchoring for one or two nights, depending on the guests' desire to party. The route back to Mallorca holds one last surprise before reaching the port of Palma: Cala Egos, to the west of Andrax. Rates for chartering *Atalanta* range from €25,000/week in low season to €29,000/week in July, August and during special events (plus 18% VAT). Prices do not include provisions, fuel or berthing rates. Translation: Endeavour Services

